

References for color communication

Juergen Seitz, GMG, 2015/12/07



gmg^{color}

GRACoL

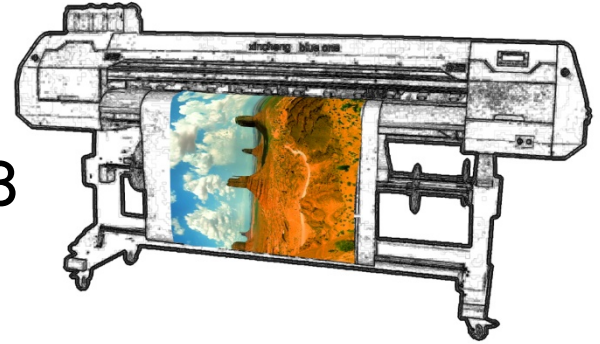
ISO PSUncoated

FOGRA51

PSOnewspaper26v4

Variables, variables...

▶ Every improvement of the accuracy of our quality measures, enlarges the number of variables



▶ ... for more and more output channels

▶ ... for more inking systems and pigments

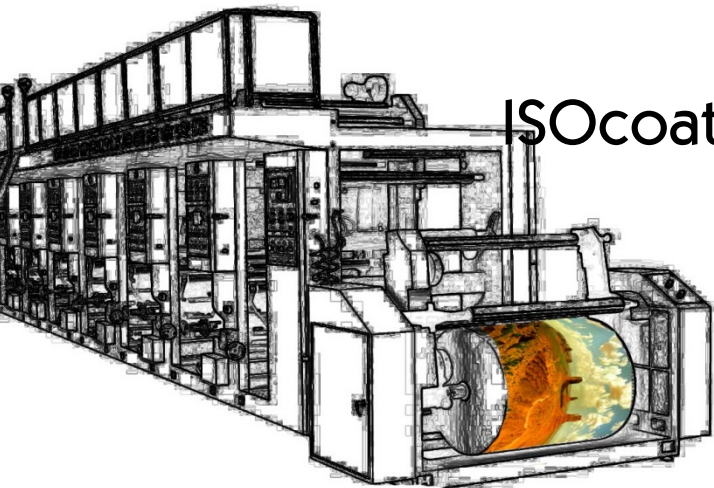


▶ ... 3664

PSR

JapanColor

SNAP2007

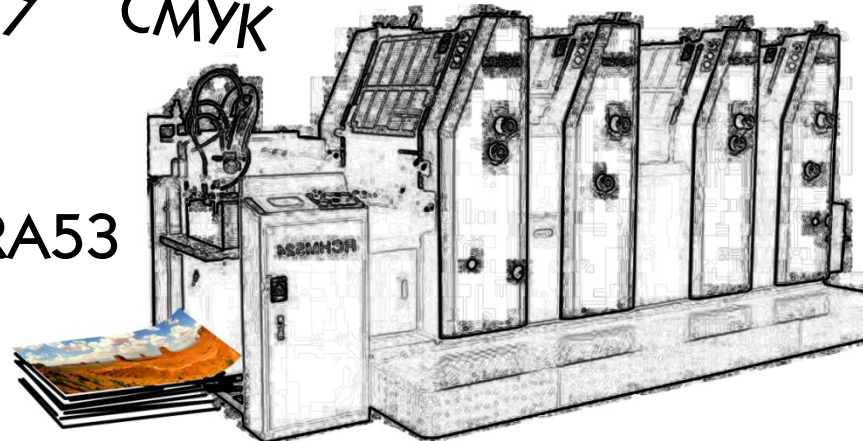


ISOcoatedV2

12647

CMYK

FOGRA53



References for color communication

- ▶ We used to use physical references for color communication in the past?



References for color communication

◀ ... and we still do!



References for color communication

- ▶ ... and we are used to accept process specific differences or tolerances.

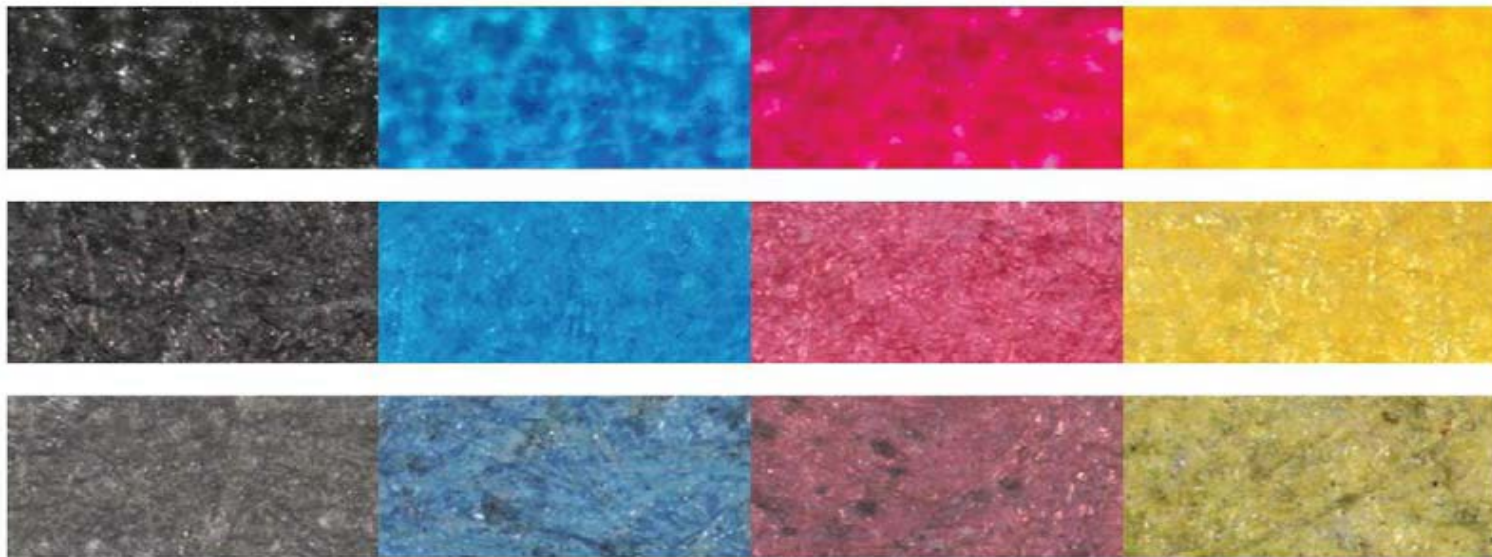


Abbildung A-135: Mikroskopaufnahmen von Primärfarben-Volltöne, die standardisiert auf Bilderdruckpapier (1), Naturpapier (2) und Zeitungspapier (3) gedruckt wurden.

References for color communication

- ◀ What is the color reference for an image in a digital workflow?

```
10110000110110001111101101110110001010000000111
00010110000110110001111101101110110001010000000
11000011011000111110110111011000101000000011100
01100011111011011101100010100000001110000110001
00011011000111110110111011000101000000011100001
01100001101100011111011011101100010100000001110
01101100011111011011101100010100000001110000110
11000111110110111011000101000000011100001100011
10001011000011011000111110110111011000101000000
11000011011000111110110111011000101000000011100
10000110110001111101101110110001010000000111000
00110110001111101101110110001010000000111000011
01100001101100011111011011101100010100000001110
00101100001101100011111011011101100010100000001
10000110110001111101101110110001010000000111000
11000111110110111011000101000000011100001100011
00110110001111101101110110001010000000111000011
```



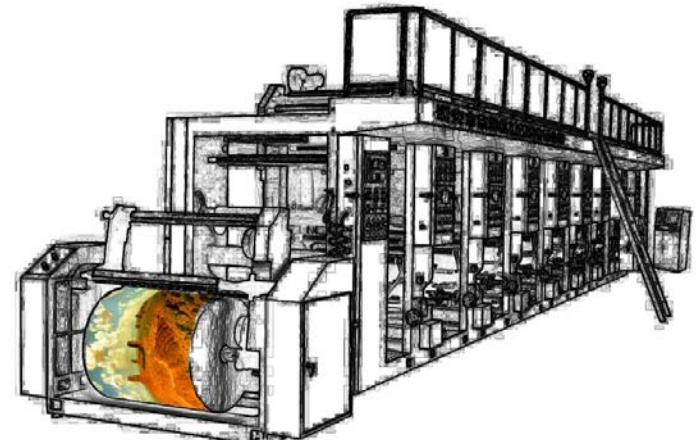
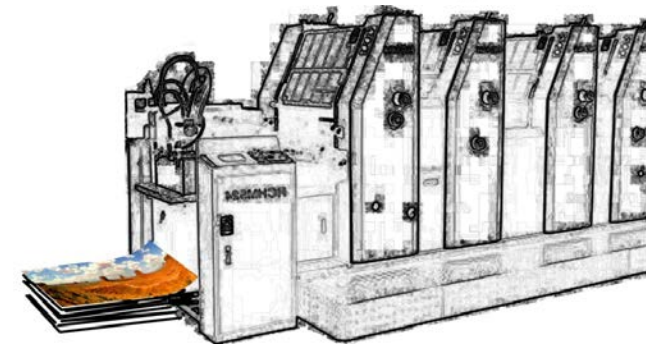
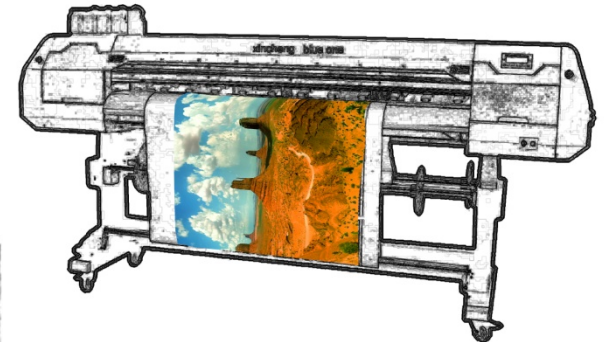
References for color communication

- ▶ A digital proof is the most reliable tool to create physical color references.



References for color communication

◀ ... for the many output options.



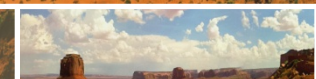
References for color communication

- ▶ ... either as a relative reference



References for color communication

- ▶ many use-cases take a proof just as a relative reference for a production.
E.g. „FOGRA39-proof for everything“



References for color communication

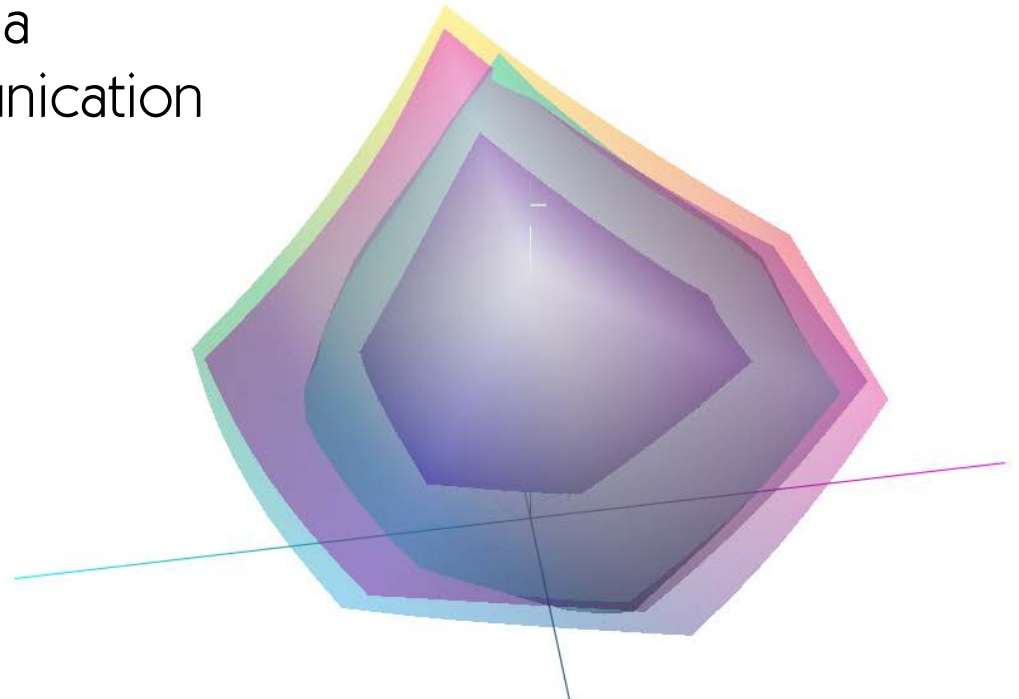
- ▶ ... or an absolute reference, where the printing process parameters and the substrate tint are considered accurately.



References for color communication

◀ Tasks:

- Find a measure to describe the quality of a relative match
- Establish one (or 2?, or 3?) colorspaces that covers most of the needs in a relative color communication





Wherever



a



color



goes



it



stays



that



color